

THE FARMINGTON RIVER WATERSHED

FACTS

A watershed consists of the land area that drains into a water body.

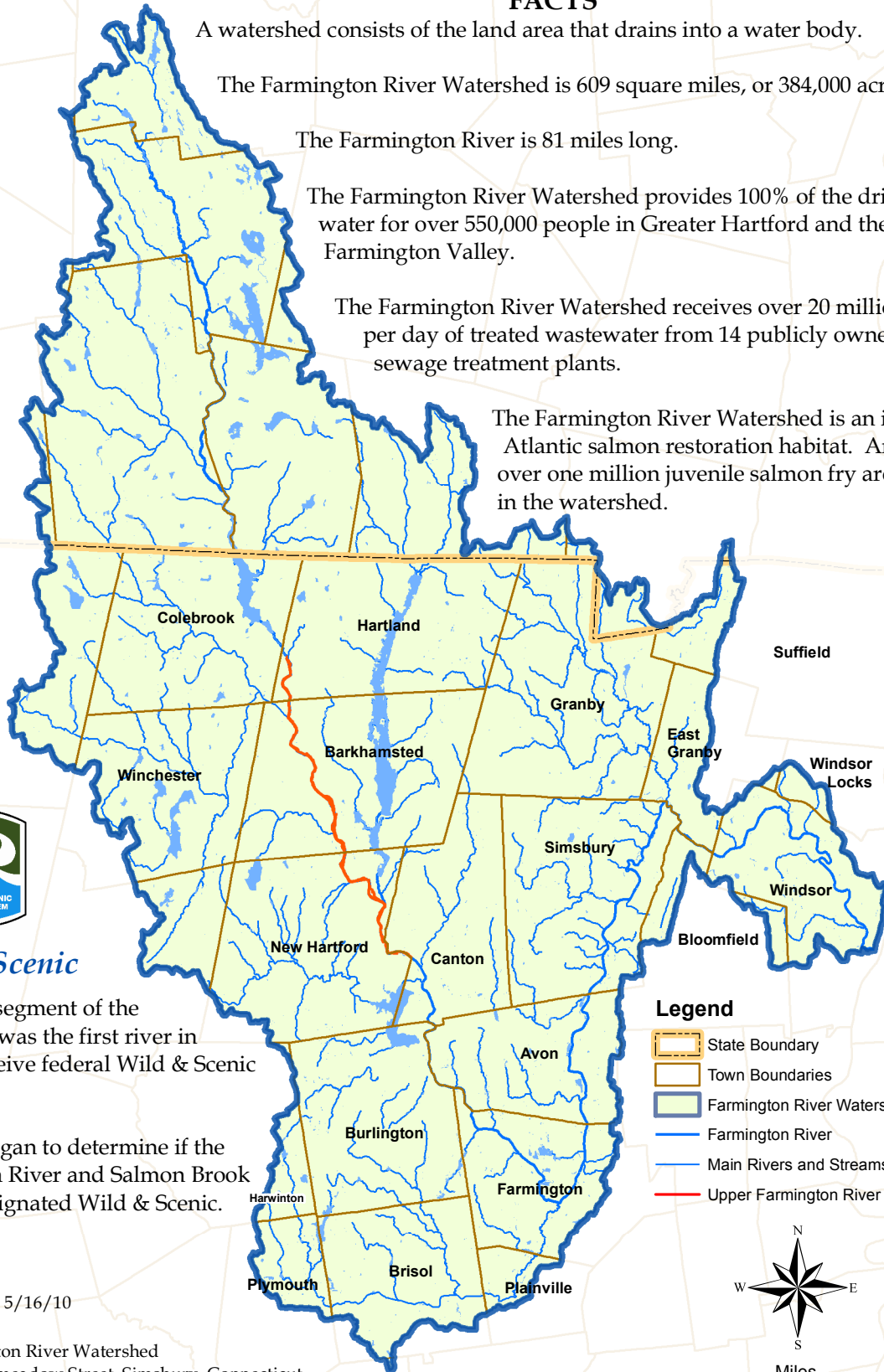
The Farmington River Watershed is 609 square miles, or 384,000 acres, in size.

The Farmington River is 81 miles long.

The Farmington River Watershed provides 100% of the drinking water for over 550,000 people in Greater Hartford and the Farmington Valley.

The Farmington River Watershed receives over 20 million gallons per day of treated wastewater from 14 publicly owned sewage treatment plants.

The Farmington River Watershed is an important Atlantic salmon restoration habitat. Annually over one million juvenile salmon fry are stocked in the watershed.



Wild & Scenic

In 1994, a 14-mile segment of the Farmington River was the first river in Connecticut to receive federal Wild & Scenic designation.

In 2007, a study began to determine if the Lower Farmington River and Salmon Brook should also be designated Wild & Scenic.

For general use.

Created by JSB, FRWA 5/16/10

Figure Prepared by:



Farmington River Watershed

749 Hopmeadow Street, Simsbury, Connecticut

Phone: 860-658-4442 Website: <http://www.frwa.org>

The FRWA is a 501 (c)(3) nonprofit organization dedicated to the preservation and protection of the Farmington River and its Watershed through research, education, and advocacy.

Legend

- State Boundary
- Town Boundaries
- Farmington River Watershed Boundary
- Farmington River
- Main Rivers and Streams
- Upper Farmington River Wild & Scenic



0 2.5 5 10 Miles